

## Product Datasheet



# beta Tubulin Antibody

Catalog No: AB0042

Reactivity: Human Mouse Rat Zebrafish

Isotype: Rabbit IgG

Applications: WB IHC IP

[www.biopple.cn](http://www.biopple.cn)

### Information

**UniProt ID:** P07437

**All Names:** Beta 4 tubulin; Beta 5 tubulin; Beta1 tubulin; Tubulin beta chain; Tubulin beta class I;

**Form:** Liquid

**Storage instructions:** Store at +4°C short term. Store at -20°C long term. Avoid freeze / thaw cycle.

**Storage buffer:** pH 7.4, 150mM NaCl, 0.02% sodium azide and 50% glycerol.

**Purity:** Affinity-chromatography

**Immunogen:** A synthesized peptide

**Molecular Wt.:** 50 kDa

### Application

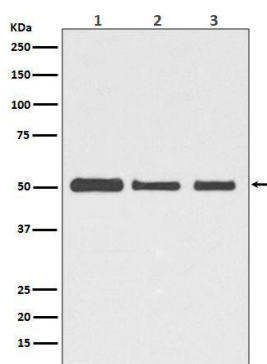
WB 1:3000~1:10000

IHC 1:50~1:200

IP 1:50

### Background

Tubulin is the major constituent of microtubules. It binds two moles of GTP, one at an exchangeable site on the beta chain and one at a non-exchangeable site on the alpha chain.



Western blot analysis of beta Tubulin expression in (1) HeLa cell lysate; (2) NIH/3T3 cell lysate; (3) C6 cell lysate.

**For Research Use Only. Not For Use In Diagnostic Procedures.**

[www.biopple.cn](http://www.biopple.cn)