

## Product Datasheet



# Phospho-GSK3 (alpha + beta)(Y216 + Y279)

## Antibody

Catalog No: CY6567

Reactivity: Human, Mouse, Rat

[www.biopple.cn](http://www.biopple.cn)

Isotype: Rabbit IgG

Applications: WB, IHC, ICC

### Information

**UniProt ID:** P49840

**All Names:** DKFZp686D0638; glycogen synthase kinase 3 alpha; Glycogen synthase kinase-3 alpha; GSK-3 alpha; GSK3A

**Form:** Liquid

**Storage instructions:** Store at +4°C short term. Store at -20°C long term. Avoid freeze / thaw cycle.

**Storage buffer:** pH 7.4, 150mM NaCl, 0.02% sodium azide and 50% glycerol.

**Purity:** Affinity-chromatography

**Immunogen:** A synthesized peptide

**Molecular Wt.:** 51,46kDa

### Application

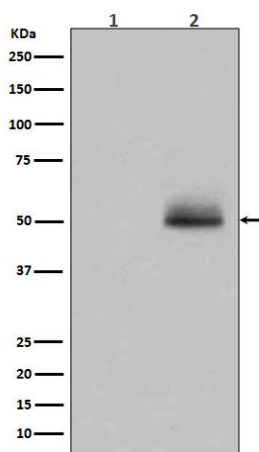
WB: 1:500~1:2000

IHC: 1:50~1:200

ICC: 1:50~1:200

### Background

GSK3A a proline-directed protein kinase of the GSK family. Implicated in the control of several regulatory proteins including glycogen synthase, Myb, and c-Jun. GSK3 and GSK3 have similar functions. GSK3 phosphorylates tau, the principal component of neurofibrillary tangles in Alzheimer disease and is required for maximal production of amyloid plaque peptides by secretase.



Western blot analysis of GSK3 alpha/ beta phosphorylation expression in 293 cell lysate treated with AP.

**For Research Use Only. Not For Use In Diagnostic Procedures.**

[www.biopple.cn](http://www.biopple.cn)