

Product Datasheet



Ferritin Antibody

Catalog No: CY5648

Reactivity: Human Mouse Rat

Isotype: Rabbit IgG

Applications: WB ICC/IF

www.biopple.cn

Information

UniProt ID: P02794

All Names: FTH1; Ferritin heavy chain; Ferritin heavy polypeptide 1; FHC; FTHL6; PIG15; PLIF; FTH;

Form: Liquid

Storage instructions: Store at +4°C short term. Store at -20°C long term. Avoid freeze / thaw cycle.

Storage buffer: pH 7.4, 150mM NaCl, 0.02% sodium azide and 50% glycerol.

Purity: Affinity-chromatography

Immunogen: A synthesized peptide

Molecular Wt.: 21 kDa

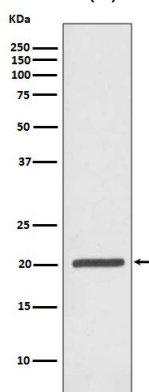
Application

WB: 1:500~1:2000

ICC/IF: 1:50~1:200

Background

Ferritin (FTH) is a ubiquitous and highly conserved protein which plays a major role in iron homeostasis by sequestering and storing iron in a non-toxic and bioavailable form (1). The assembled ferritin molecule, often referred to as a nanocage, can store up to 4,500 atoms of iron (2,3). It forms a holoenzyme of ~450 kDa, consisting of 24 subunits made up of two types of polypeptide chains: ferritin heavy chain and ferritin light chain, each having unique functions. Ferritin heavy chains catalyze the first step in iron storage, the oxidation of Fe(II), whereas ferritin light chains promote the nucleation of ferrihydrite, enabling storage of Fe(III) (4). In addition to iron buffering, heavy chain ferritin also enhances thymidine biosynthesis (5). Serum ferritin levels serve as an indicator of the amount of iron stored in the body. Serum ferritin is the most sensitive test for anaemia. The level of serum ferritin is markedly elevated in inflammation, malignancy, and iron overload disorders (6). Research studies have found that defects in ferritin proteins are also associated with several neurodegenerative diseases (7).



Western blot analysis of Ferritin expression in Jurkat cell lysate.

For Research Use Only. Not For Use In Diagnostic Procedures.

www.biopple.cn