

Product Datasheet

Akt(pan) 1/2/3 Antibody



Catalog No: CY5561

Reactivity: Human Mouse Rat

www.biopple.cn

Isotype: Rabbit IgG

Applications: WB IHC ICC/IF IP FC

Information

UniProt ID: P42574

All Names: PKB;RAC;PRKBA;PKB-ALPHA;RAC-ALPHA; AKT1 ; AKT2; AKT3; Akt1/2/3; pan Akt;

Form: Liquid

Storage instructions: Store at +4°C short term. Store at -20°C long term. Avoid freeze / thaw cycle.

Storage buffer: pH 7.4, 150mM NaCl, 0.02% sodium azide and 50% glycerol.

Purity: Affinity-chromatography

Immunogen: A synthesized peptide

Molecular Wt.: 56 kDa

Application

WB: 1:500~1:2000

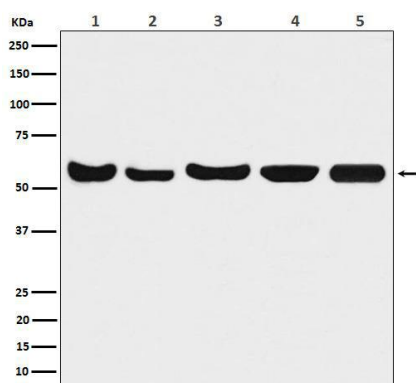
IHC: 1:50~1:200

ICC/IF: 1:50~1:200

IP: 1:50

Background

Akt, also referred to as PKB or Rac, plays a critical role in controlling survival and apoptosis. This protein kinase is activated by insulin and various growth and survival factors to function in a wortmannin -sensitive pathway involving PI3 kinase. Akt is activated by phospholipid binding and activation loop phosphorylation at Thr308 by PDK1 and by phosphorylation within the carboxy terminus at Ser473. The previously elusive PDK2 responsible for phosphorylation of Akt at Ser473 has been identified as mammalian target of rapamycin (mTOR) in a rapamycin-insensitive complex with rictor and Sin1.



Western blot analysis of Akt(pan)1/2/3 expression in (1) A549 cell lysate; (2) Mouse brain lysate; (3) Rat brain lysate; (4) Rat heart lysate; (5) Rat kidney lysate.

For Research Use Only. Not For Use In Diagnostic Procedures.

www.biopple.cn