

## Product Datasheet



# Phospho-p38 MAPK (Thr180/Tyr182) Antibody

Catalog No: CY6391

Reactivity: Human, Mouse, Rat

Isotype: Rabbit IgG

Applications: WB IHC IF

[www.biopple.cn](http://www.biopple.cn)

### Information

**UniProt ID:** Q16539

**All Names:** CRK1, CSAID binding protein, CSBP, CSBP1, CSBP2, Cytokine suppressive anti-inflammatory drug binding protein, EC 2.7.11.24, MAP kinase MXI2, MAP kinase p38, MAPK14, MAX-interacting protein 2, MK14, MXI2, Mitogen-activated protein kinase 14,

**Form:** Liquid

**Storage instructions:** Store at +4° C short term. Store at -20° C long term. Avoid freeze / thaw cycle.

**Storage buffer:** pH 7.4, 150mM NaCl, 0.02% sodium azide and 50% glycerol.

**Purity:** Affinity-chromatography

**Immunogen:** A synthesized peptide derived from human p38 MAPK around the phosphorylation site of Thr180/Tyr182)

**Molecular Wt.:** 43 kDa

### Application

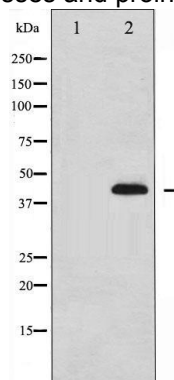
WB: 1:500~1:2000

IHC: 1:50~200

IF: 1:50~200

### Background

The protein encoded by this gene is a member of the MAP kinase family. MAP kinases act as an integration point for multiple biochemical signals, and are involved in a wide variety of cellular processes such as proliferation, differentiation, transcription regulation and development. This kinase is activated by various environmental stresses and proinflammatory cytokines.



Western blot analysis of p38 MAPK phosphorylation expression in Jurkat whole cell lysates. The lane on the left is treated with the synthesized peptide.

**For Research Use Only. Not For Use In Diagnostic Procedures.**

[www.biopple.cn](http://www.biopple.cn)