

## Product Datasheet

# beta Tubulin Antibody (HRP conjugated)

Catalog No: AB2002

Reactivity: Human Mouse Rat

Isotype: Rabbit IgG

Applications: WB



[www.biopple.cn](http://www.biopple.cn)

### Information

**UniProt ID:** Q13509

**All Names:** beta-4; CFEOM3A; MC1R; TBB3; TUBB3; TUBB4; Tubulin beta-3 chain; tubulin beta-4; Tubulin beta-4 chain; Tubulin beta-III; tubulin, beta 3; tubulin, beta, 4,beta tubulin;

**Form:** Liquid

**Storage instructions:** Store at +4°C short term. Store at -20°C long term. Avoid freeze / thaw cycle.

**Storage buffer:** pH 7.4, 150mM NaCl, 0.02% sodium azide and 50% glycerol.

**Purity:** Affinity-chromatography

**Immunogen:** A synthesized peptide

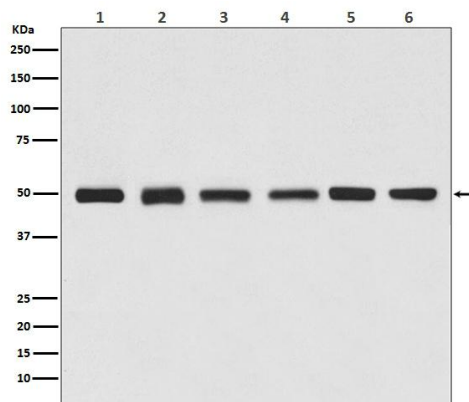
**Molecular Wt.:** 50 kDa

### Application

WB 1:5000~1:20000

### Background

Microtubules are constituent parts of the mitotic apparatus, cilia, flagella, and elements of the cytoskeleton. They consist principally of 2 soluble proteins, alpha- and beta-tubulin, each of about 55,000 kDa. Antibodies against beta Tubulin are useful as loading controls for Western Blotting. However it should be noted that levels of beta-Tubulin may not be stable in certain cells. For example, expression of beta-Tubulin in adipose tissue is very low and therefore beta-Tubulin should not be used as loading control for these tissues.



Western blot analysis of beta Tubulin expression in (1) Jurkat cell lysate, (2) Human kidney lysate, (3) 3T3 cell lysate, (4) Mouse brain lysate, (5) C6 cell lysate, (6) Rat heart lysate.

**For Research Use Only. Not For Use In Diagnostic Procedures.**

[www.biopple.cn](http://www.biopple.cn)