

Product Datasheet

GAPDH Antibody (HRP conjugated)



Catalog No: AB2000

Reactivity: H, R, M, Mk, Ch, Ze, Fish

Isotype: Rabbit IgG

Applications: WB

www.biopple.cn

Information

UniProt ID: P04406

All Names: aging-associated gene 9 protein; G3P; G3PD; GAPD; GAPDH; glyceraldehyde 3-phosphate dehydrogenase; Glyceraldehyde-3-phosphate dehydrogenase; MGC88685

Form: Liquid

Storage instructions: Store at +4°C short term. Store at -20°C long term. Avoid freeze / thaw cycle.

Storage buffer: pH 7.4, 150mM NaCl, 0.02% sodium azide and 50% glycerol.

Purity: Affinity-chromatography

Immunogen: A synthesized peptide

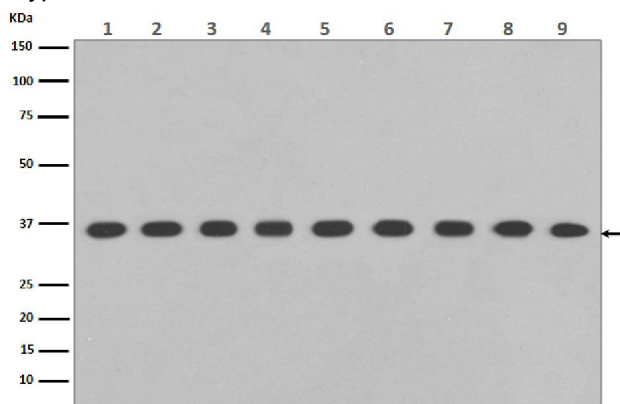
Molecular Wt.: 36 kDa

Application

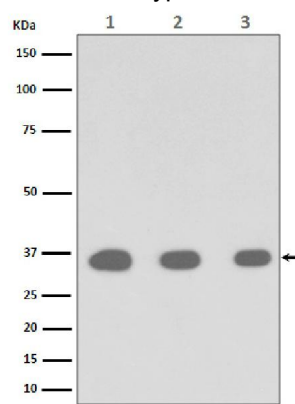
WB 1:5000~1:20000

Background

Glyceraldehyde 3 phosphate dehydrogenase (GAPDH) is well known as one of the key enzymes involved in glycolysis. GAPDH is constitutively abundant expressed in almost cell types at high levels, therefore antibodies against GAPDH are useful as loading controls for Western Blotting. Some pathology factors, such as hypoxia and diabetes, increased or decreased GAPDH expression in certain cell types.



Western blot analysis of GAPDH expression in (1) Hela cell lysate; (2) Jurkat cell lysate; (3) Mouse kidney lysate; (4) Mouse spleen lysate; (5) RAW 264.7 cell lysate; (6) Rat brain lysate with GAPDH Antibody.



Western blot analysis of mouse stomach lysates with GAPDH Antibody (1)WB:1:5000;(2)1:10000;(3)1:20000

For Research Use Only. Not For Use In Diagnostic Procedures.

www.biopple.cn