

Product Datasheet



beta Actin Antibody

Catalog No: AB0035

Reactivity: Human Mouse Rat

www.biopple.cn

Isotype: Rabbit IgG

Applications: WB IHC ICC/IF

Information

UniProt ID: P60709

All Names: ACTIN; ACTB; BETA-ACTIN; beta actin; actin beta;

Form: Liquid

Storage instructions: Store at +4°C short term. Store at -20°C long term. Avoid freeze / thaw cycle.

Storage buffer: pH 7.4, 150mM NaCl, 0.02% sodium azide and 50% glycerol.

Purity: Affinity-chromatography

Immunogen: A synthesized peptide

Molecular Wt.: 42 kDa

Application

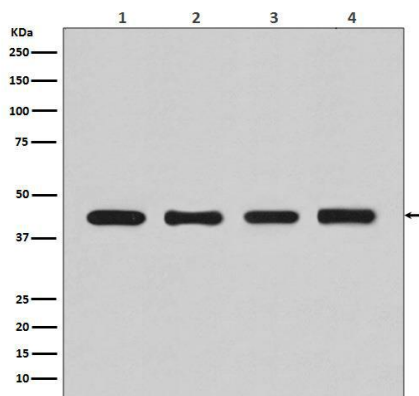
WB 1:3000~1:10000

IHC 1:50~1:200

ICC/IF 1:50~1:200

Background

beta-Actin is one of six different actin isoforms that have been identified. The actin molecules found in cells of various species and tissues tend to be very similar in their immunological and physical properties. Therefore, Antibodies against beta-Actin are useful as loading controls for Western Blotting. However it should be noted that levels of beta-Actin may not be stable in certain cells. For example, expression of beta-Actin in adipose tissue is very low and therefore it should not be used as loading control for these tissues.



Western blot analysis of beta Actin expression in (1)HeLa cell lysate; (2)Human fetal kidney lysate; (3)NIH/3T3 cell lysate; (4) PC-12 cell lysate.

For Research Use Only. Not For Use In Diagnostic Procedures.

www.biopple.cn