

Product Datasheet



ATG5 Antibody

Catalog No: CY5766 Reactivity: Human Mouse Rat

www.biopple.cn

Isotype: Rabbit IgG Applications: WB IHC ICC/IF IP

Information

UniProt ID: Q9H1Y0

All Names: APG 5L; APG5; APG5 autophagy 5 like; APG5 like; APG5-like; Apoptosis specific protein; ASP; ATG 5; ATG5 autophagy related 5 homolog; Autophagy protein 5; hAPG5;

Form: Liquid

Storage instructions: Store at +4°C short term. Store at -20°C long term. Avoid freeze / thaw cycle.

Storage buffer: pH 7.4, 150mM NaCl, 0.02% sodium azide and 50% glycerol.

Purity: Affinity-chromatography

Immunogen: A synthesized peptide

Molecular Wt.: 55 kDa

Application

WB 1:1000~1:2000

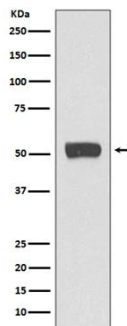
IHC 1:50~1:200

ICC/IF 1:50~1:200

IP 1:50

Background

Required for autophagy. Conjugates to ATG12 and associates with isolation membrane to form cup-shaped isolation membrane and autophagosome. Involved in mitochondrial quality control after oxidative damage, and in subsequent cellular longevity.



Western blot analysis of ATG5 expression in Raji cell lysate.

For Research Use Only. Not For Use In Diagnostic Procedures.

www.biopple.cn