

## Product Datasheet

# LC3B Antibody



Catalog No: CY5992

Reactivity: Human Mouse Rat

[www.biopple.cn](http://www.biopple.cn)

Isotype: Rabbit IgG

Applications: WB ICC/IF IP

### Information

**UniProt ID:** Q9GZQ8

**All Names:** ATG8F; LC3B; MAP1LC3B; MLP3B; MAP1LC3B;

**Form:** Liquid

**Storage instructions:** Store at +4°C short term. Store at -20°C long term. Avoid freeze / thaw cycle.

**Storage buffer:** pH 7.4, 150mM NaCl, 0.02% sodium azide and 50% glycerol.

**Purity:** Affinity-chromatography

**Immunogen:** A synthesized peptide

**Molecular Wt.:** 14,16 kDa

### Application

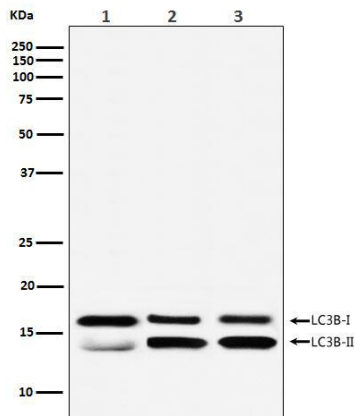
WB 1:500~1:2000

ICC/IF 1:50~1:200

IP 1:50

### Background

Ubiquitin-like modifier involved in formation of autophagosomal vacuoles (autophagosomes). Plays a role in mitophagy which contributes to regulate mitochondrial quantity and quality by eliminating the mitochondria to a basal level to fulfill cellular energy requirements and preventing excess ROS production.



Western blot analysis of LC3B expression in (1) Human brain lysate; (2) RAW 264.7 cell lysate; (3) C6 cell lysate.

**For Research Use Only. Not For Use In Diagnostic Procedures.**

[www.biopple.cn](http://www.biopple.cn)