

Product Datasheet

E-cadherin Antibody

Catalog No: CY1155

Reactivity: Human

Isotype: Rabbit IgG

Applications: WB IHC ICC/IF FC



郑州白苹生物科技有限公司

www.zzbpsw.com

Information

UniProt ID: P12830

All Names: Arc-1; CADH1; cadherin 1, E-cadherin (epithelial); cadherin 1, type 1; cadherin 1, type 1, E-cadherin (epithelial); Cadherin-1; calcium-dependent adhesion protein, epithelial; CAM 120/80; CD324; CDH1; CDHE; cell-CAM 120/80; E-Cad/CTF1; E-Cad/CTF2;

Form: Liquid

Storage instructions: Store at +4°C short term. Store at -20°C long term. Avoid freeze / thaw cycle.

Storage buffer: pH 7.4, 150mM NaCl, 0.02% sodium azide and 50% glycerol.

Purity: Affinity-chromatography

Immunogen: A synthesized peptide

Molecular Wt.: 80kDa/120kDa

Application

WB 1:5000~1:10000

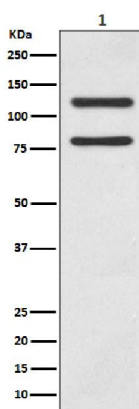
IHC 1:100~1:500

ICC/IF 1:100~1:500

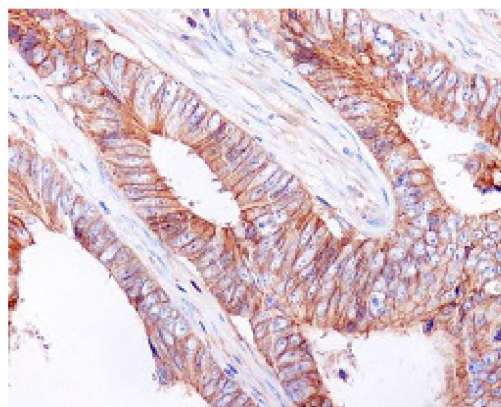
FC 1:500

Background

CDH1 a single-pass type I membrane protein, and calcium dependent cell adhesion proteins. It is a ligand for integrin alpha-E/beta-7, and it colocalizes with DLG7 at sites of cell-cell contact in intestinal epithelial cells. Anchored to actin microfilaments through association with alpha-, beta- and gamma-catenin. Sequential proteolysis induced by apoptosis or calcium influx, results in translocation from sites of cell-cell contact to the cytoplasm. Involved in mechanisms regulating cell-cell adhesions, mobility and proliferation of epithelial cells. Defects in CDH1 are involved in dysfunction of the cell-cell adhesion system, triggering cancer invasion (gastric, breast, ovary, endometrium and thyroid) and metastasis.



Western blot analysis of E-cadherin expression in MCF7 cell lysate.



Immunohistochemical analysis of paraffin-embedded human colon cancer, using E Cadherin Antibody.

For Research Use Only. Not For Use In Diagnostic Procedures.

www.zzbpsw.com