

## Product Datasheet

# METTL3 Antibody



Catalog No: CY7240

Reactivity: Human Mouse Rat

Isotype: Rabbit IgG

Applications: WB IHC ICC/IF IP FC

<http://www.zzbpsw.com>

### Information

**UniProt ID:** Q86U44

**All Names:** IME4; M6A; Methyltransferase like protein 3; METTL3; MTA70; N6 adenosine methyltransferase 70 kDa subunit;

**Form:** Liquid

**Storage instructions:** Store at +4° C short term. Store at -20° C long term. Avoid freeze / thaw cycle.

**Storage buffer:** pH 7.4, 150mM NaCl, 0.02% sodium azide and 50% glycerol.

**Purity:** Affinity-chromatography

**Immunogen:** A synthesized peptide

**Molecular Wt.:** 70kDa

### Application

WB 1:500~1:2000

IHC 1:50~1:200

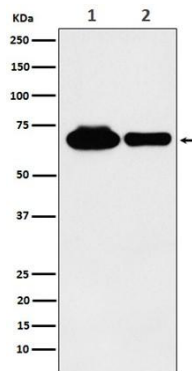
ICC/IF 1:50~1:200

IP 1:50

FC 1:50

### Background

N6-methyltransferase that methylates adenosine residues of some mRNAs. N6-methyladenosine (m6A), which is present at internal sites of some mRNAs, may play a role in the efficiency of mRNA splicing, transport or translation.



Western blot analysis of METTL3 expression in (1) 293 cell lysate; (2) RAW 264.7 cell lysate.

**For Research Use Only. Not For Use In Diagnostic Procedures.**

<http://www.zzbpsw.com>